

OUTDOOR RENTAL CENTER CATALOG

Prices charged per roughly 24-hour period
(ex. pick up one day and return the following day)

Hello from the Boise State Outdoor Program!

The Boise State Outdoor Rental Center boasts a fleet of high quality outdoor gear and equipment for all your recreation needs. The Outdoor Rental Center is available to students, faculty and staff, and the community at large. Our staff is knowledgeable, passionate, and excited to set you up with everything you need for your next adventure.

The catalog in your hands gives an overview of our most popular equipment. Inside you'll find daily rental prices for standup paddleboards (SUPs), backpacks, kayaks, tents, stoves, rafts of all sizes, skis, snowboards, and much more. If you have further questions about the equipment that we offer, just give us a call. We'll be excited to help you out.

Ready to get your adventure rolling? Got questions about where to go or what to bring? Give us a call at (208) 426-1946, email us at OutdoorProgram@boisestate.edu, or come see us in the Southeast corner of the Boise State University Campus Recreation Center. We're open from 10 a.m. to 6 p.m. in the summer and noon to 6 p.m. during the rest of the year.

See you outside,

The Outdoor Rental Center

RIVER



11'6" Puma Raft Paddle Package (4 people)

Member: \$56.00
Non-Member: \$70.00



11'6" Puma Row Package

Member: \$68.00
Non-Member: \$85.00



13' Raft Paddle Package (7 people)

Member: \$60.00
Non-Member: \$75.00



13' Row Package

Member: \$72.00
Non-Member: \$90.00



13' Super Puma Raft Paddle Package (7 people)

Member: \$60.00
Non-Member: \$75.00



13' Super Puma Row Package

Member: \$75.00
Non-Member: \$90.00

Every raft package includes enough paddles/oars and PFDs to outfit all raft passengers

Prices charged at a daily rate



**14' Raft Paddle Package
(7 people)**

Member: \$64.00
Non-Member: \$80.00



14' Row Package

Member: \$80.00
Non-Member: \$100.00



**15' Raft Paddle Package
(9 people)**

Member: \$68.00
Non-Member: \$85.00



15' Row Package

Member: \$84.00
Non-Member: \$105.00



**Detachable Frame
for 14' or 15' Raft**

Member: \$16.00
Non-Member: \$20.00



Stern Frame

Member: \$12.00
Non-Member: \$15.00



Puma & Super Frame

Member: \$12.00
Non-Member: \$15.00

Every raft package includes enough paddles/oars and PFDs to outfit all raft passengers

Prices charged at a daily rate



Cargo Net

Member: \$3.20
Non-Member: \$4.00



Cargo Platform

Member: \$3.20
Non-Member: \$4.00



Dry Bag - 110L

Member: \$4.00
Non-Member: \$5.00



Dry Bag - Sizes 22L, 38L, 55L

Member: \$3.20
Non-Member: \$4.00



Dry Bag - 5L

Member: \$3.00
Non-Member: \$3.00



Dry Box

Member: \$8.00
Non-Member: \$10.00



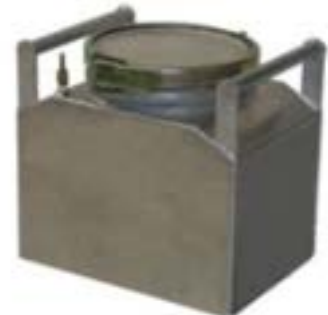
94 Quart Igloo Cooler

Member: \$5.60
Non-Member: \$7.00



Groover With Seat

Member: \$12.00
Non-Member: \$15.00



Groover Spare Tank (no seat)

Member: \$7.00
Non-Member: \$10.00

Prices charged at a daily rate



Fire Pan

Member: \$5.60
Non-Member: \$7.00



**NRS Cam Strap Bag
(4 of each: 2', 4', 6', 9' and 12')**

Member: \$4.80
Non-Member: \$6.00



Oar - 7' 8' 9' 10'

Member: \$6.40
Non-Member: \$8.00



Raft Paddle - Crew

Member: \$3.20
Non-Member: \$4.00



Deluxe River Tube

Member: \$16.00
Non-Member: \$20.00



Basic River Tube

Member: \$5.00
Non-Member: \$7.00



Type III Personal Flotation Device

Member: \$4.00
Non-Member: \$5.00



Type V Personal Flotation Device - Adult or Plus

Member: \$3.00
Non-Member: \$5.00



Type V Personal Flotation Device - Youth

Member: \$3.00
Non-Member: \$5.00

Prices charged at a daily rate



Adult Splash Jacket

Member: \$4.00
Non-Member: \$6.50



Wetsuit

Member: \$4.00
Non-Member: \$5.00



Dry Suit

Member: \$32.00
Non-Member: \$40.00



Wetsuit Booties

Member: \$4.00
Non-Member: \$5.00



White Water Helmet - Kayak

Member: \$4.80
Non-Member: \$6.00



White Water Helmet

Member: \$3.20
Non-Member: \$4.00



White Water Kayak Paddle

Member: \$7.00
Non-Member: \$9.00



Spray Skirt

Member: \$6.00
Non-Member: \$7.00

Prices charged at a daily rate



White Water Kayak Package

Member: \$30.00
 Non-Member: \$38.00



**Inflatable Kayak Package
 (1 person)**

Member: \$32.00
 Non-Member: \$40.00



**Inflatable Kayak Package
 (2 person)**

Member: \$40.00
 Non-Member: \$50.00



**Touring Canoe Package
 (Includes 2 Canoe Paddles,
 2 Type III PFD's, 4 Canoe
 Blocks, 2 9' Cam Straps)**

Member: \$28.00
 Non-Member: \$35.00



**Inflatable Stand Up
 Paddleboard Package**

Member: \$40.00
 Non-Member: \$50.00

Prices charged at a daily rate

CAMPING



1 Person Tent

Member: \$8.00
Non-Member: \$10.00



2 Person Tent

Member: \$8.00
Non-Member: \$10.00



3 Person Tent

Member: \$9.60
Non-Member: \$12.00



4 Person Tent

Member: \$9.60
Non-Member: \$12.00



6 Person Tent

Member: \$11.20
Non-Member: \$14.00



Bear Canister

Member: \$4.00
Non-Member: \$5.00



Single Burner Stove

Member: \$2.40
Non-Member: \$3.00



Trekking Poles

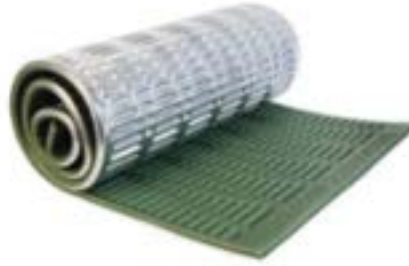
Member: \$4.80
Non-Member: \$6.00

Prices charged at a daily rate



Backpacking Package

Member: \$12.00
Non-Member: \$15.00



Sleeping Pad

Member: \$2.40
Non-Member: \$3.00



Backpack

Member: \$8.00
Non-Member: \$10.00



Fall/Spring Sleeping Bag with Liner - 22 Degree

Member: \$5.60
Non-Member: \$7.00



Summer Sleeping Bag with Liner - 30 Degree

Member: \$4.80
Non-Member: \$6.00



Winter Sleeping Bag with Liner - 5 Degree

Member: \$6.40
Non-Member: \$8.00



Bouldering Crash Pad

Member: \$9.60
Non-Member: \$12.00



Freedom Wheelchair

Call for more details

Prices charged at a daily rate

WINTER



Avalanche Safety Kit

Member: \$24.00
Non-Member: \$30.00



Avalanche Beacon

Member: \$20.00
Non-Member: \$25.00



Snow Shovel

Member: \$4.00
Non-Member: \$5.00



Avalanche Probe

Member: \$4.80
Non-Member: \$6.00



Overboots

Member: \$8.00
Non-Member: \$10.00



Snowshoes

Member: \$9.60
Non-Member: \$12.00



Kids Snowshoes

Member: \$7.20
Non-Member: \$9.00



Snowshoes Package

Member: \$12.80
Non-Member: \$16.00

Prices charged at a daily rate



Snow Saw

Member: \$2.80
Non-Member: \$3.50



Snow Gear Sled

Member: \$16.00
Non-Member: \$20.00



Telemark Ski Package

Member: \$24.00
Non-Member: \$30.00



Telemark Skis

Member: \$12.00
Non-Member: \$15.00



Ski Skins

Member: \$8.00
Non-Member: \$10.00



Adjustable Ski Poles

Member: \$4.80
Non-Member: \$6.00



Telemark Ski Boots

Member: \$8.00
Non-Member: \$10.00



Cross Country Classic Ski Package

Member: \$16.00
Non-Member: \$20.00



Cross Country Classic Skis

Member: \$9.60
Non-Member: \$12.00



Cross Country Classic Ski Poles

Member: \$4.00
Non-Member: \$5.00



Cross Country Classic Ski Boots

Member: \$6.40
Non-Member: \$8.00

Prices charged at a daily rate



Cross Country Skate Ski Package

Member: \$16.00
Non-Member: \$20.00



Cross Country Skate Skis

Member: \$9.60
Non-Member: \$12.00



Cross Country Skate Ski Poles

Member: \$4.00
Non-Member: \$5.00



Cross Country Skate Ski Boots

Member: \$6.40
Non-Member: \$8.00



Alpine/Downhill Ski Package

Member: \$24.00
Non-Member: \$30.00



Alpine/Downhill Skis

Member: \$16.00
Non-Member: \$20.00



Alpine/Downhill Ski Poles

Member: \$3.20
Non-Member: \$4.00



Alpine/Downhill Ski Boots

Member: \$8.00
Non-Member: \$10.00



Snow Helmet

Member: \$4.80
Non-Member: \$6.00



Snowboard Package

Member: \$24.00
Non-Member: \$30.00



Snowboard

Member: \$16.00
Non-Member: \$20.00



Snowboard Boots

Member: \$8.00
Non-Member: \$10.00

Prices charged at a daily rate